



WIOA Primary Indicators of Performance: PY 2122 July 21-March 22

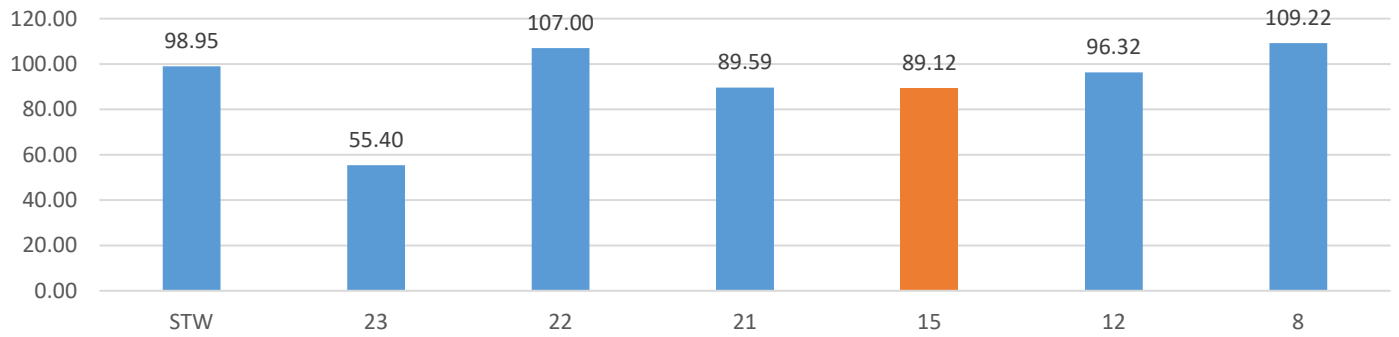
LWDB 15

Measures	PY2021-2022 2nd Quarter Performance	PY2021-2022 % of Performance Goal Met For Q2	PY2021-2022 3rd Quarter Performance	PY2021-2022 % of Performance Goal Met For Q3	PY2021-2022 Performance Goals
Adults:					
Employed 2nd Qtr After Exit	74.80	87.49	76.20	89.12	85.50
Median Wage 2nd Quarter After Exit	\$10,066	107.09	\$10,115	107.61	\$9,400
Employed 4th Qtr After Exit	76.80	85.33	78.00	86.67	90.00
Credential Attainment Rate	74.80	88.00	72.30	85.06	85.00
Measurable Skill Gains	71.10	118.50	74.00	123.33	60.00
Dislocated Workers:					
Employed 2nd Qtr After Exit	82.70	97.29	85.20	100.24	85.00
Median Wage 2nd Quarter After Exit	\$12,969	131.00	\$11,739	118.58	\$9,900
Employed 4th Qtr After Exit	84.80	95.28	82.50	92.70	89.00
Credential Attainment Rate	84.40	120.57	82.70	118.14	70.00
Measurable Skill Gains	68.10	89.02	76.00	99.35	76.50
Youth:					
Employed 2nd Qtr After Exit	70.00	85.37	70.60	86.10	82.00
Median Wage 2nd Quarter After Exit	\$5,433	110.88	\$5,070	103.47	\$4,900
Employed 4th Qtr After Exit	66.50	78.24	67.70	79.65	85.00
Credential Attainment Rate	52.60	59.10	47.60	53.48	89.00
Measurable Skill Gains	27.20	49.45	29.50	53.64	55.00
Wagner Peyser:					
Employed 2nd Qtr After Exit	61.70	88.14	63.50	90.71	70.00
Median Wage 2nd Quarter After Exit	\$6,498	110.14	\$6,843	115.98	\$5,900
Employed 4th Qtr After Exit	64.60	95.00	65.30	96.03	68.00
Not Met (less than 90% of negotiated)					
Met (90-100% of negotiated)					
Exceeded (greater than 100% of negotiated)					

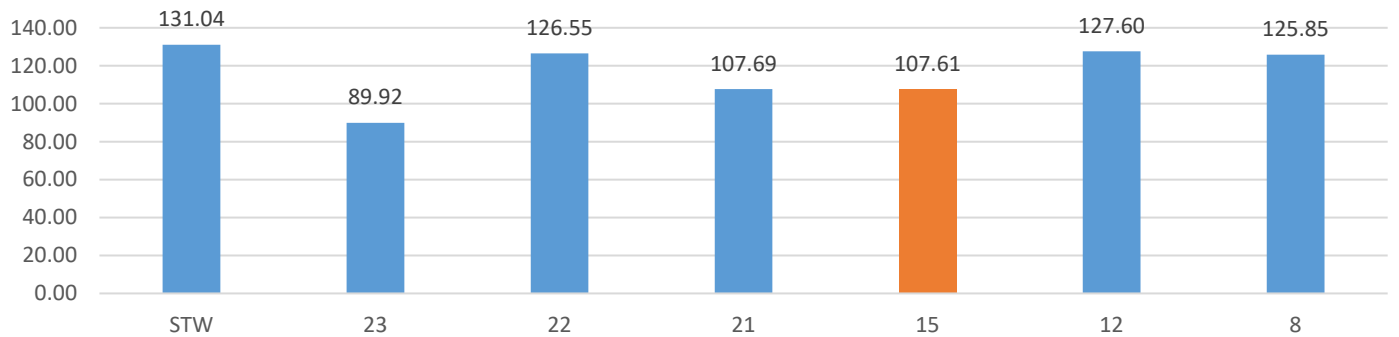
Measures	PY2021-2022 2nd Quarter Performance	PY2021-2022 % of Performance Goal Met For Q2	PY2021-2022 3rd Quarter Performance	PY2021- 2022 % of Performance Goal Met For Q3	PY2021-2022 Performance Goals
Adults:					
Employed 2nd Qtr After Exit	83.10	97.19	84.60	98.95	85.50
Median Wage 2nd Quarter After Exit	\$8,881	126.87	\$9,173	131.04	\$7,000
Employed 4th Qtr After Exit	81.70	96.69	82.40	97.51	84.50
Credential Attainment Rate	79.90	117.50	80.50	118.38	68.00
Measurable Skill Gains	72.20	147.35	69.80	142.45	49.00
Dislocated Workers:					
Employed 2nd Qtr After Exit	84.80	99.76	89.50	105.29	85.00
Median Wage 2nd Quarter After Exit	\$10,373	146.10	\$10,401	146.49	\$7,100
Employed 4th Qtr After Exit	81.90	101.74	82.40	102.36	80.50
Credential Attainment Rate	85.00	121.43	85.20	121.71	70.00
Measurable Skill Gains	70.70	144.29	72.10	147.14	49.00
Youth:					
Employed 2nd Qtr After Exit	81.20	102.14	81.70	102.77	79.50
Median Wage 2nd Quarter After Exit	\$4,114	128.56	\$4,295	134.22	\$3,200
Employed 4th Qtr After Exit	78.40	105.95	79.20	107.03	74.00
Credential Attainment Rate	85.00	111.11	83.70	109.41	76.50
Measurable Skill Gains	54.30	116.77	50.40	108.39	46.50
Wagner Peysers:					
Employed 2nd Qtr After Exit	58.80	90.46	59.60	91.69	65.00
Median Wage 2nd Quarter After Exit	\$6,006	117.76	\$6,416	125.80	\$5,100
Employed 4th Qtr After Exit	59.90	93.30	60.40	94.08	64.20

Regional Comparison

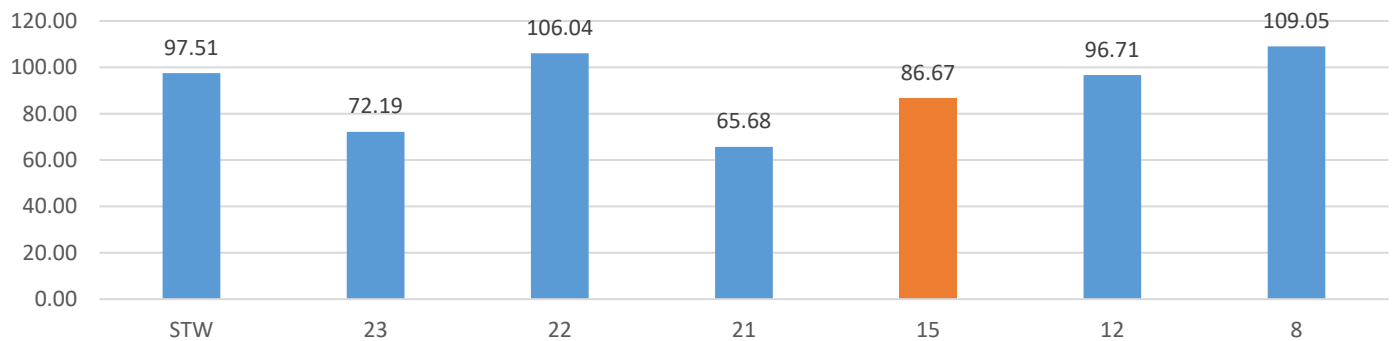
Adult Employed 2 QTR After Exit % of Goal



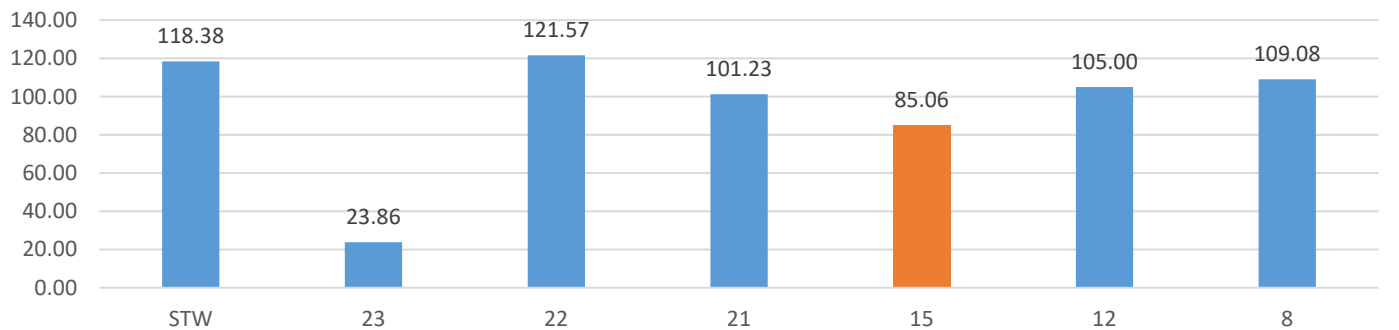
Adult Median Wage 2nd QTR After Exit % of Goal



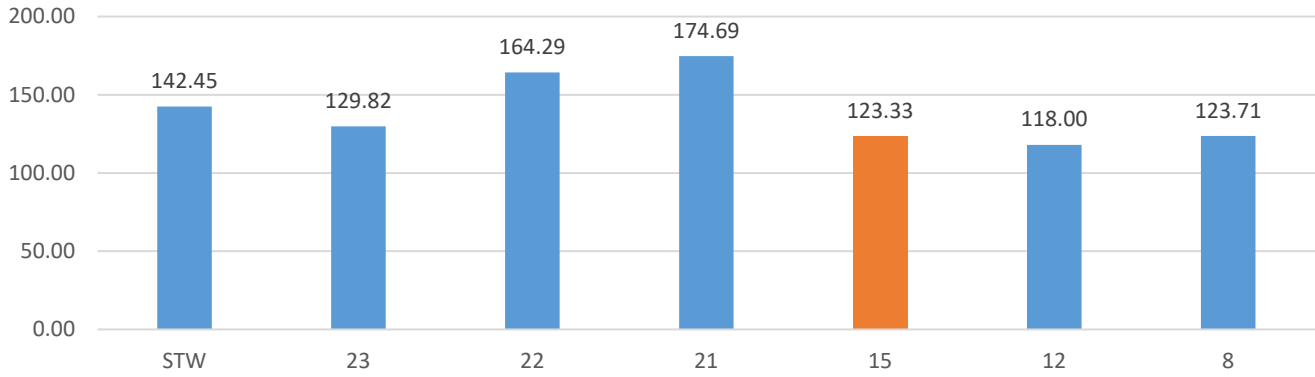
Adult Employed 4th QTR After Exit % of Goal



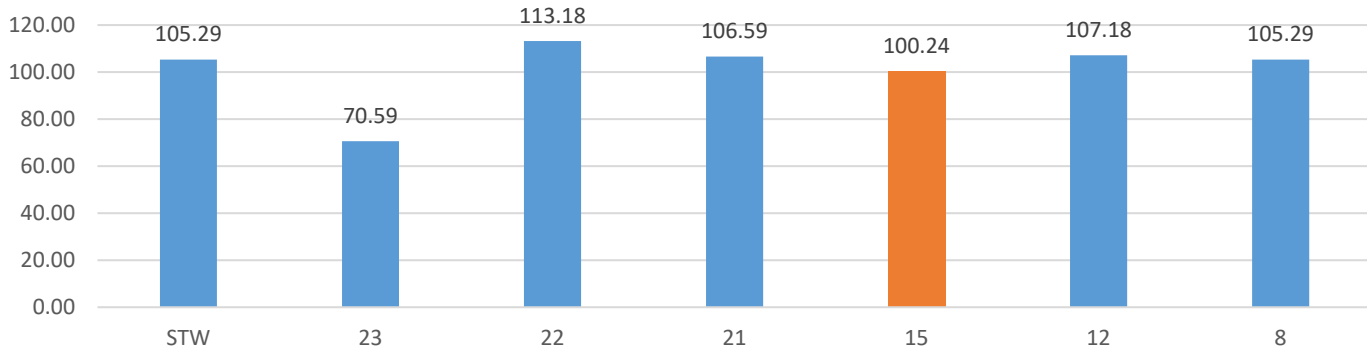
Adult Credential Attainment Rate % of Goal



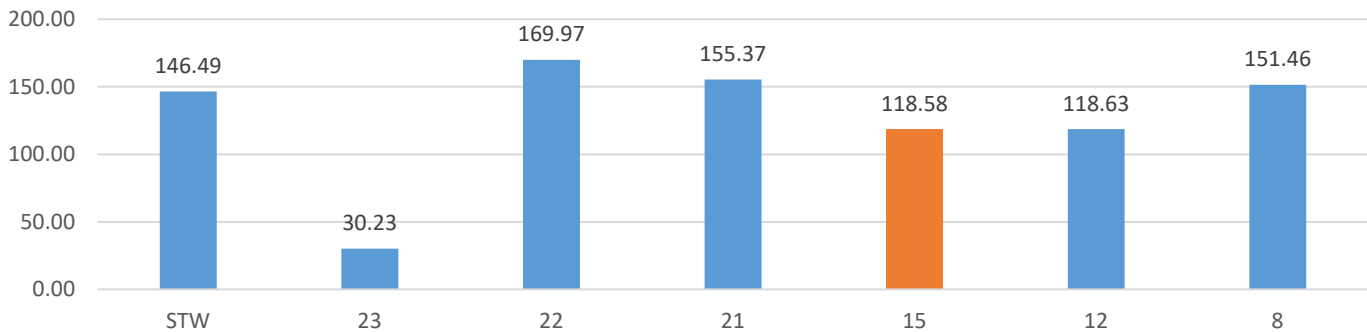
Adult Measurable Skills Gains



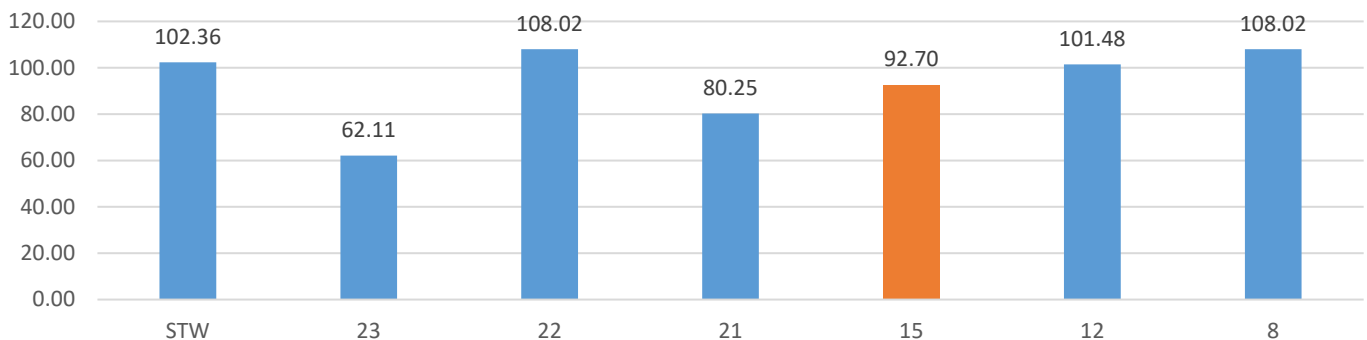
DW Employed 2nd QTR After Exit % of Goal



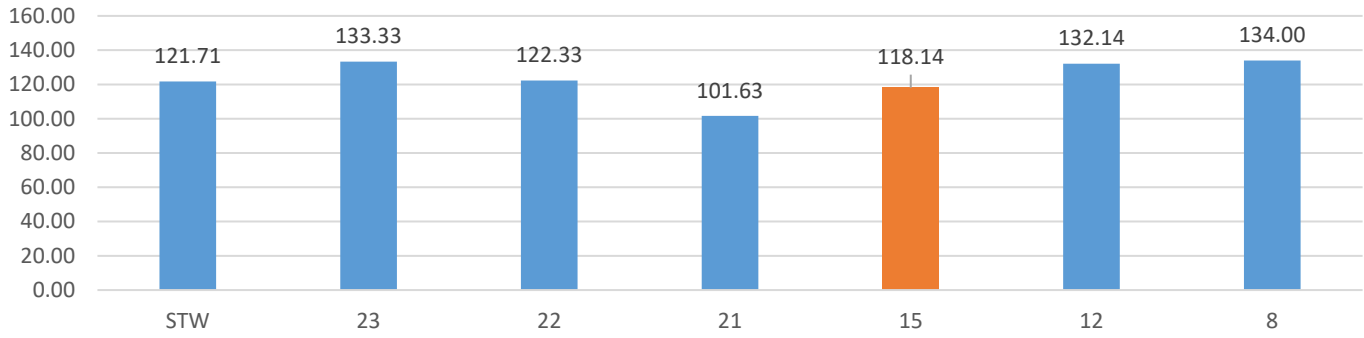
DW Median Wage 2nd QTR After Exit % of Goal



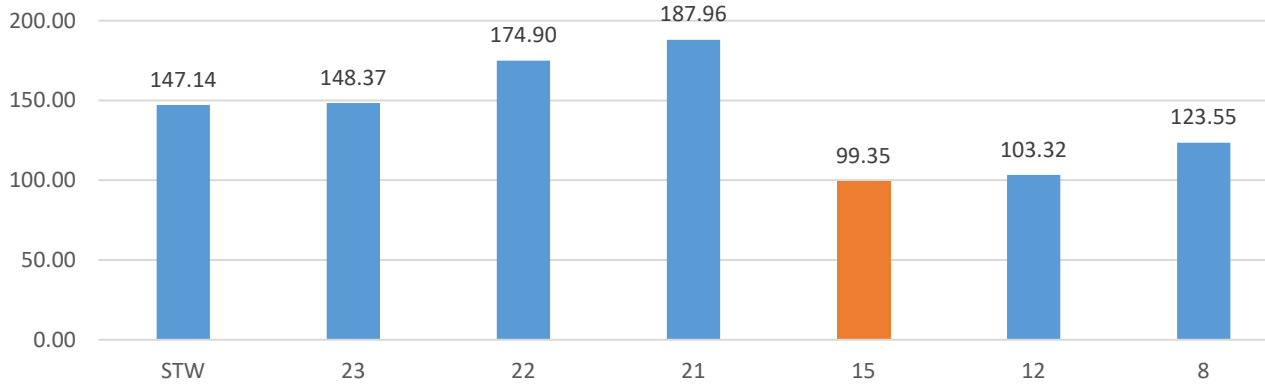
DW Employed 4th QTR After Exit % of Goal



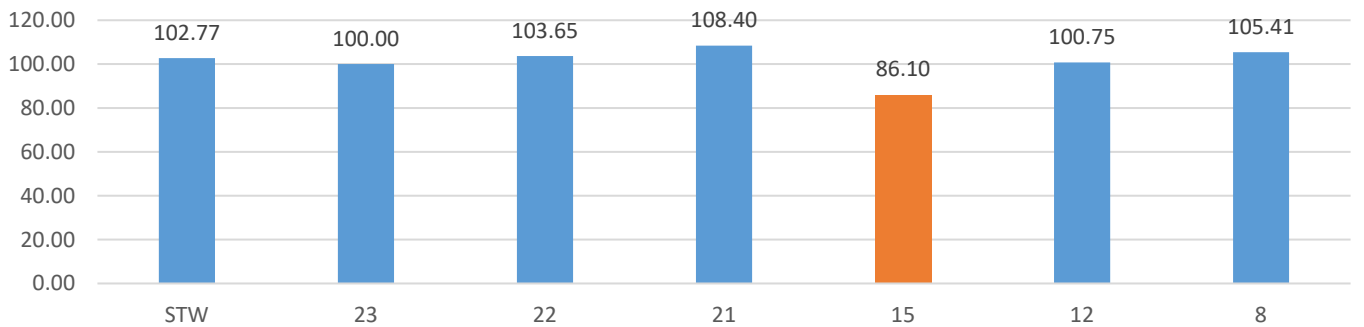
DW Credential Attainment Rate % of Goal



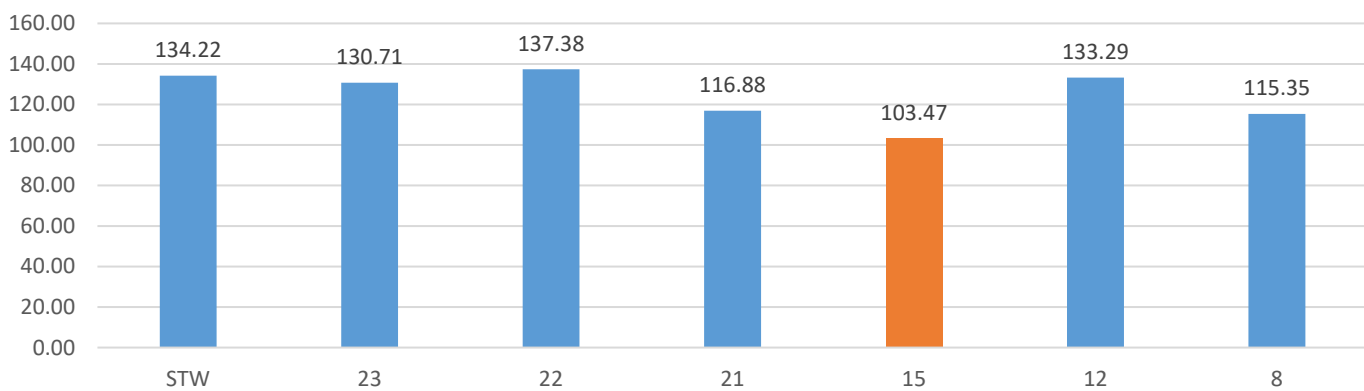
DW Measurable Skills Gains % of Goal



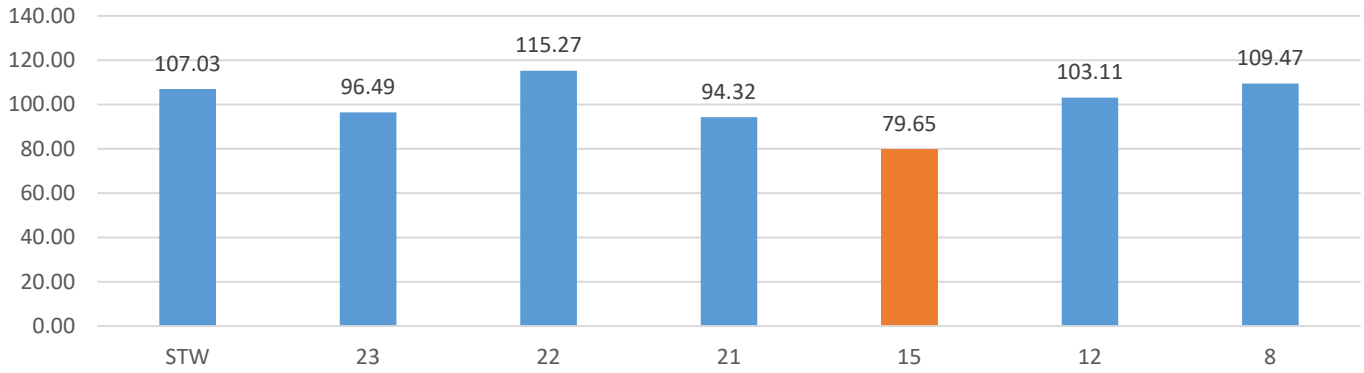
Youth Employed 2nd QTR After Exit % of Goal



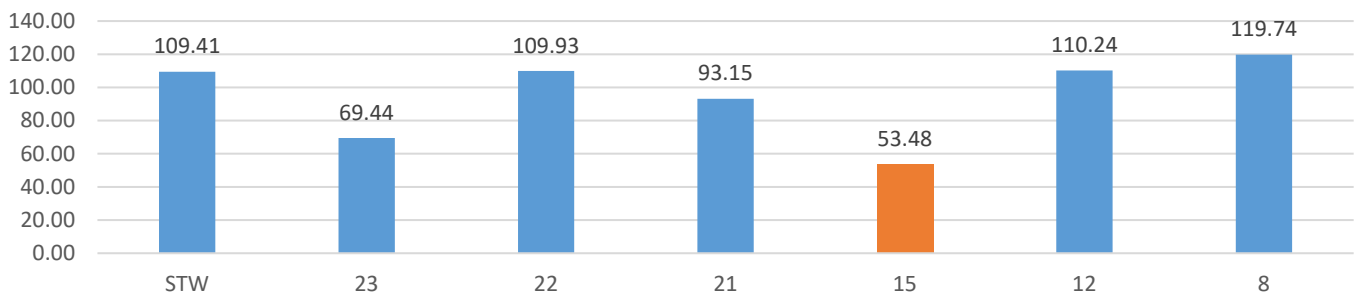
Youth Median Wage 2nd Quarter After % of Goal



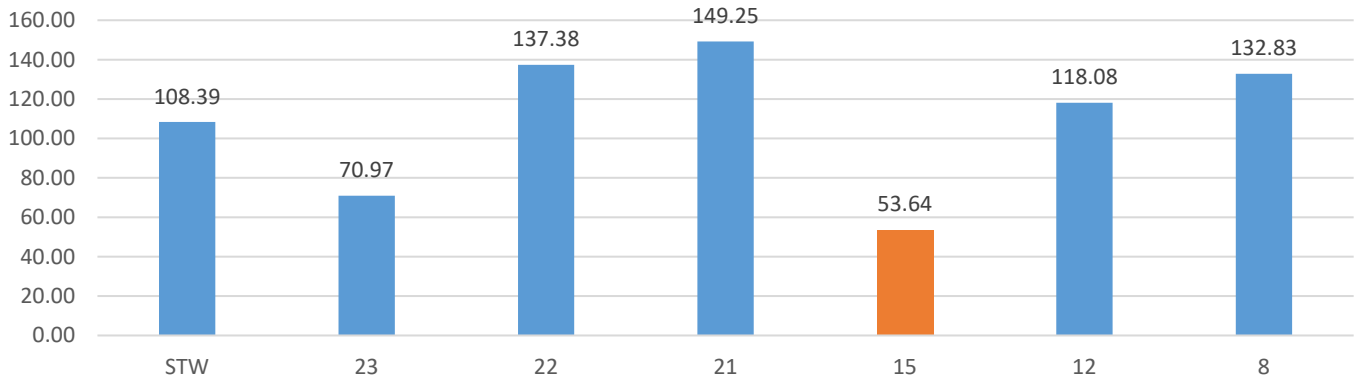
Youth Employed 4th QTR After Exit % of Goal



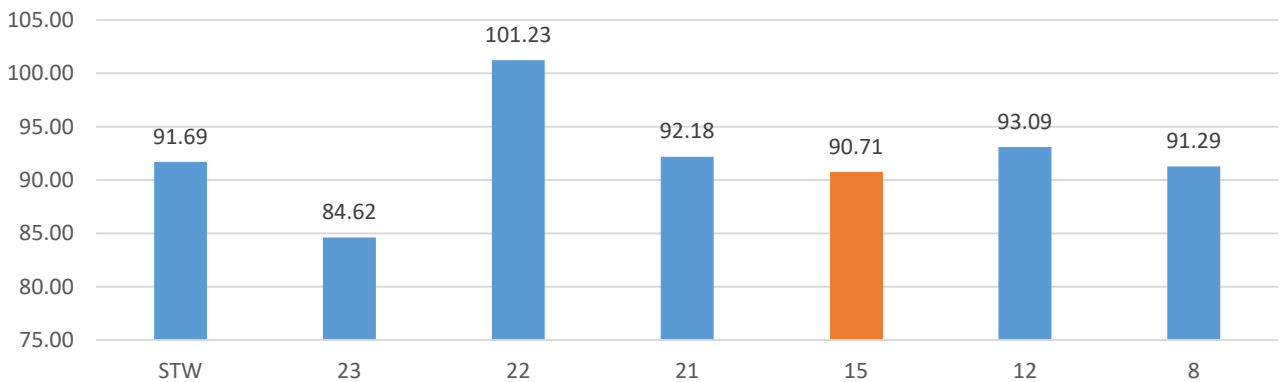
Youth Credential Attainment % of Goal



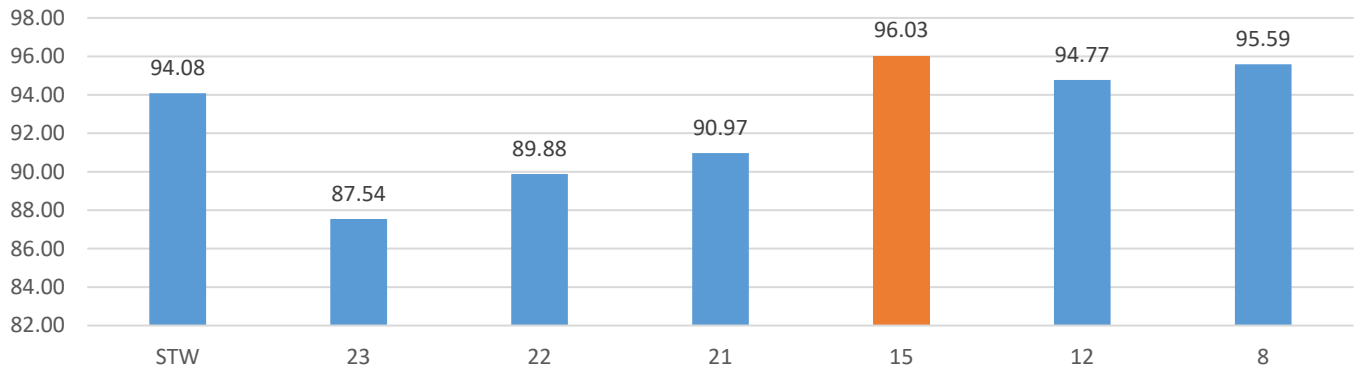
Youth Measurable Skills Gains % of Goal



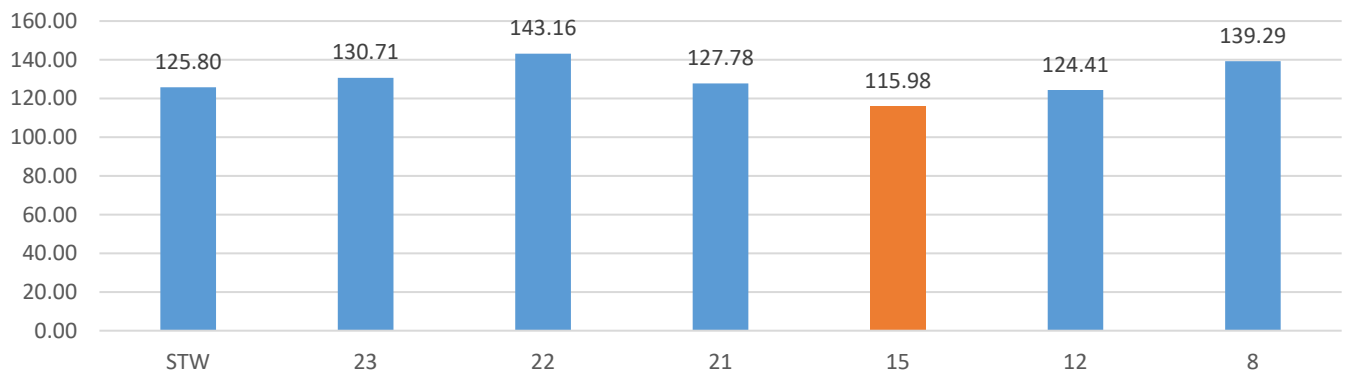
WP Employed 2nd QTR After Exit % of Goal



WP Employed 4th Quarter After Exit % of Goal



WP Median Wage 2nd QTR After Exit % of Goal



Region 8- CareerSource North Florida

Region 12 CareerSource Central Florida

Region 21- CareerSource Palm Beach

Region 22- CareerSource Broward

Region 23- CareerSource South Florida